



C E L CONSULTING

A DIVISION OF CONSOLIDATED ENGINEERING

January 24, 2013

Project No. D50541

Mr. Eric Dausman  
Sutro Tower, Inc.  
1 La Avanzada Street  
San Francisco, CA 94131-1124

**SUBJECT: Sutro Tower**  
1 La Avanzada Street  
San Francisco, CA

**Routine Inspection of Leg A, North Face and Stack A**

Dear Mr. Dausman:

We have completed our inspection of Leg A, the North Face Trusses, the Strands, the Base of all legs and Stack A above the 6<sup>th</sup> level. The routine inspection was performed on December 10, 11 and 27, 2012. The Stack was inspected on January 19, 2013.

**Purpose**

The purpose of the inspection was to check the structural portions of the tower and the attached equipment, etc. for distress due to corrosion, structural overload and/or other signs of distress or potential deterioration.

**Scope and Procedures**

The survey was performed in general accordance with the recommended approach for a Routine Inspection as described in the Inspection Procedures which were recently revised to include the appurtenant items and Stack A. The undersigned and staff engineers Reyes Rios performed the inspection of the Tower and Chad Hill also assisted in the inspection of Stack C. The strands were inspected by naked eye and binocular (8X).

The inspection included visual observations and recording by entry on the data sheets for each portion of the tower being inspected. A specific photograph was taken for the individual conditions. The data sheets and the photographs are coordinated.

### **Inspection Limitations**

We inspected the tower from the interior of the leg and horizontal trusses. No attempt was made to inspect from the exterior of the trusses and legs other than what could be seen by naked eye and binocular. These methods allow us to see most of each surface and connection, however there are still areas that are not visible.

### **Locations Not Visible during Routine Inspection**

The exterior surfaces of all three legs and all the trusses at Levels 2-4 were not visible enough from the interior or the ground to locate and indentify or quantify the conditions in these areas. STI and its independent professional engineer should consult and determine any inspection protocol which may be appropriate.

### **Results**

The individual results are shown on the data sheets, location sketches and photographs. The general results were as follows:


1. No structural members or appurtenant items were noted with distorted or distressed conditions indicating structural overload.
2. Most of the distress noted was corroded fasteners. Either the nut (usually) or the head of the bolt, or both, were corroded. The great majority of the fasteners were not corroded to the point of producing flaking buildup. However, the corroded fasteners should be cleaned and repainted. If during the cleaning significant loss of metal is found, that is, if the flats of the nut or heads are rounded at the junction of the flats due to corrosion, the fastener should be replaced.
3. We noted some appurtenant items, including corroded electrical boxes and conduit, pipe clamps and missing or loose bolts that need to be addressed.
4. As with the Leg A from the Base to Level 4, the Stack had been recently painted and there were few items noted.
5. The skin showed no signs of structural distress.
6. The strands did not have any visible distress however we did note what might be holidays or light paint coverage in some areas.
7. The bases of all three legs showed no significant observable distress. Corrosion was visible on some welds and fasteners at the base plates.

### **C E L CONSULTING**

This concludes our report of the routine inspection of Leg A, the North Face Trusses and Stack A of Sutro Tower.

If you have any questions, please contact the undersigned.

Sincerely,  
CEL Consulting

  
K. C. Dewell, Senior Engineer  
Civil Engineer No. 29110

Enclosures: Inspection Forms and Photographs

Cc: Ron Hamburger



**CEL CONSULTING**

534 23rd Avenue • Oakland, CA 94606 • (510) 436-7626 • FAX (510) 434-7719

# Inspection Summary – Year 2012

## Description of Inspection:

- Routine inspection of Leg A
- Routine inspection of horizontal levels on North face
- Routine inspection of strands on North face
- Routine inspection of strand anchors on Leg A
- Routine inspection of base – all legs

Special or In-Depth Inspections: NONE

Summary of Results: RUSTY FASTENERS, ELEC. BOX & CONDUIT  
1 MISSING BOLT @ HANDRAIL, 2 LOOSE BOLTS  
NO STRUCTURAL DISTRESS

## Summary of Recommendations:

SEE REPORT TEXT

## Checklist:

- Has a severe event occurred since the previous inspection? Yes No
- Have action items and recommendations from previous inspections been addressed in the scope of work? Yes No
- Has the inspection log for future years been revised to account for scope of work and findings of this inspection? Yes No

Signature: \_\_\_\_\_

K.C. [Signature]

Date: \_\_\_\_\_

1-24-13



BASE \$

<sup>1</sup> Miscellaneous items for the entire tower in addition to those contained in the column leg and truss forms.

<sup>1</sup> Miscellaneous items for the entire tower in addition to those contained in the column leg and truss forms.





Photo 01.JPG  
12/27/2012



Photo 02.JPG  
12/27/2012



Photo 03.JPG  
12/27/2012



Photo 04.JPG  
12/27/2012



Photo 05.JPG  
12/27/2012



Photo 06.JPG  
12/27/2012

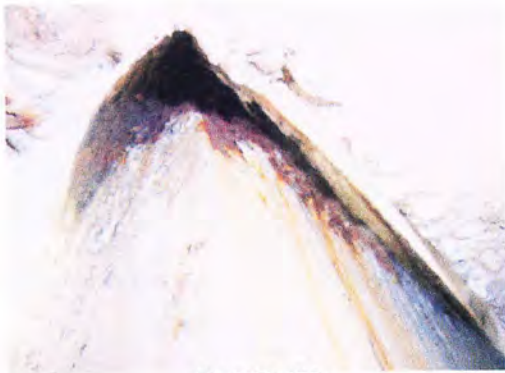


Photo 07.JPG  
12/27/2012



Photo 08.JPG  
12/27/2012



Photo 09.JPG  
12/27/2012



Photo 10.JPG  
12/27/2012



Photo 11.JPG  
12/27/2012



Photo 12.JPG  
12/27/2012



STRANDS &

<i>Sutro Tower</i>	Signature: _____	Page: <u>1</u> of <u>1</u>
<i>San Francisco, CA</i>	File: _____	Date: <u>12/27/12</u>

<sup>1</sup> Miscellaneous items for the entire tower in addition to those contained in the column leg and truss forms.





Photo 01.JPG  
12/27/2012



Photo 02.JPG  
12/27/2012

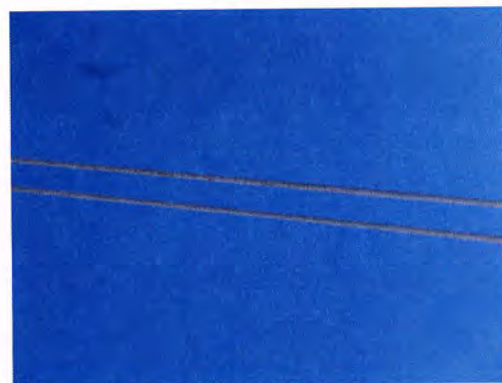


Photo 03.JPG  
12/27/2012

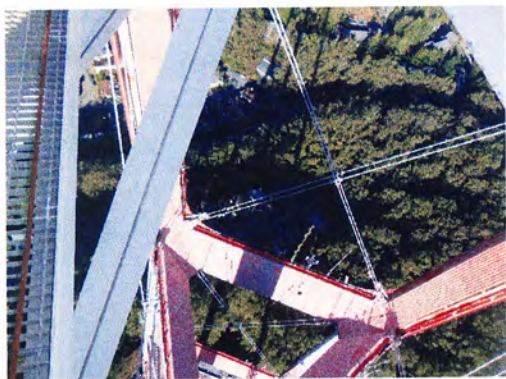


Photo 04.JPG  
12/27/2012



Photo 05.JPG  
12/27/2012



Photo 06.JPG  
12/27/2012

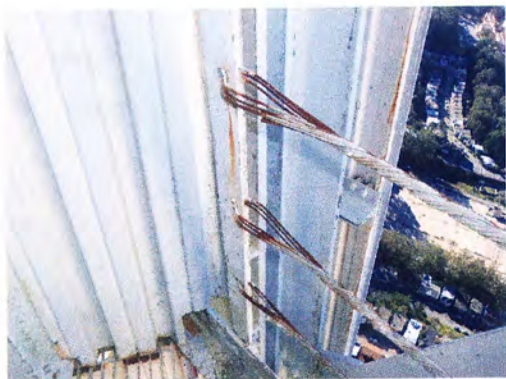


Photo 07.JPG  
12/27/2012



Photo 08.JPG  
12/27/2012

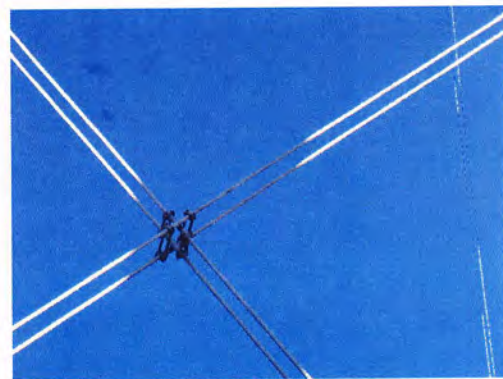


Photo 09.JPG  
12/27/2012

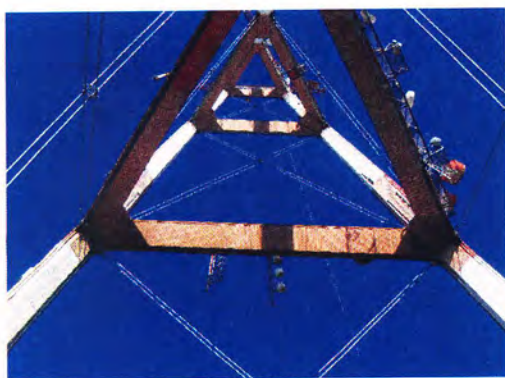


Photo 10.JPG  
12/27/2012

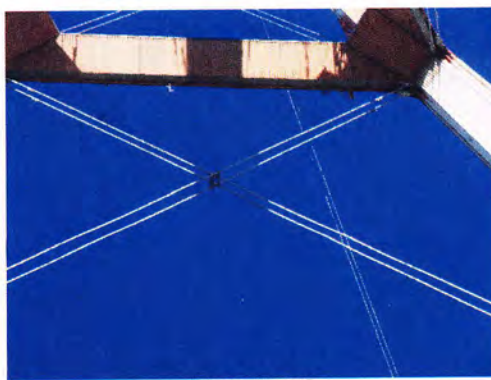


Photo 11.JPG  
12/27/2012



Photo 12.JPG  
12/27/2012



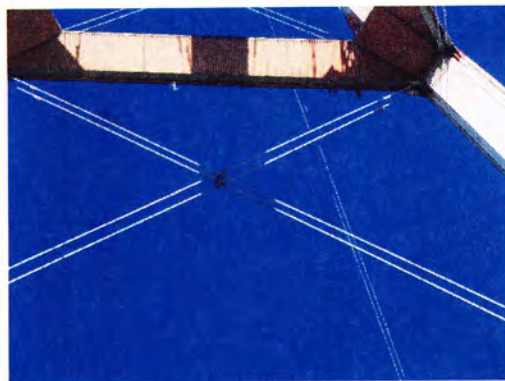


Photo 13.JPG  
12/27/2012



Photo 14.JPG  
12/27/2012

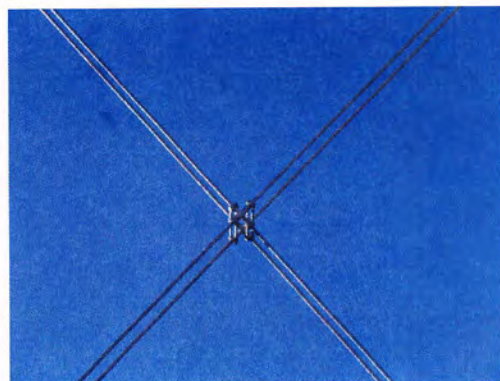


Photo 15.JPG  
12/27/2012

### Inspection Data Sheet: Leg A (Level 1 to Level 2)

[illegible]

<sup>1</sup> Item designation: L=leg member, D=diagonal, H=horizontal, C=connection, O=others





Photo 1.JPG  
12/10/2012



Photo 2.JPG  
12/10/2012



Photo 3.JPG  
12/10/2012



Photo 4.JPG  
12/10/2012



Photo 5.JPG  
12/10/2012

## Inspection Data Sheet: Leg A (Level 2 to Level 3)

[illegible]

<sup>1</sup> Item designation: L=leg member, D=diagonal, H=horizontal, C=connection, O=others





Photo 1.JPG  
12/10/2012

## Inspection Data Sheet: Leg A (Level 3 to Level 4)

[illegible]

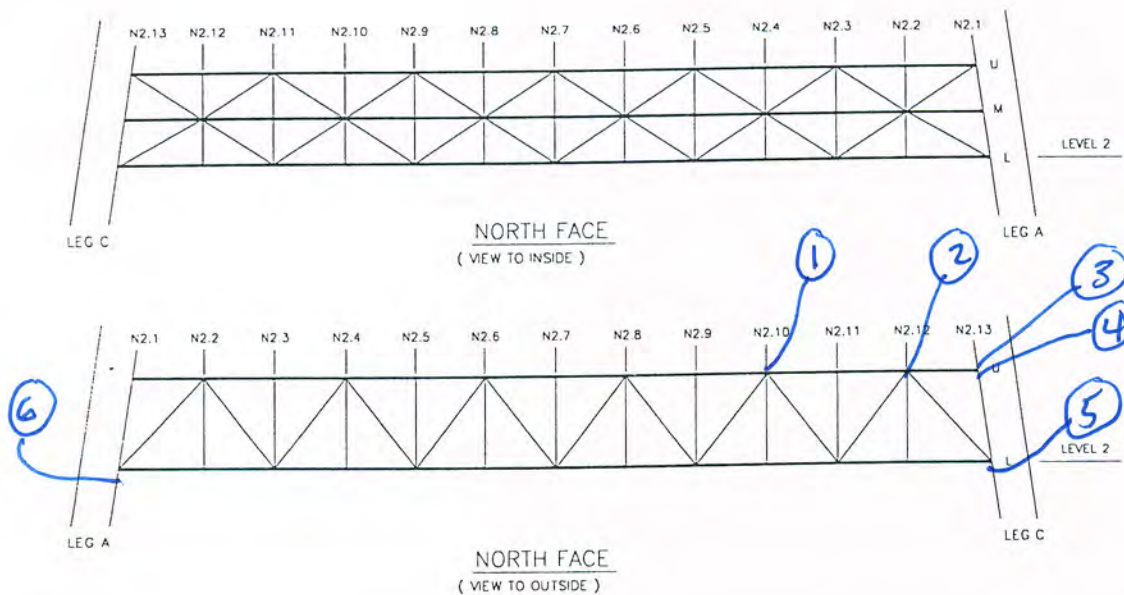
<sup>1</sup> Item designation: L=leg member, D=diagonal, H=horizontal, C=connection, O=others

## Inspection Data Sheet: North Truss (Level 2)

[illegible]

<sup>1</sup> Chord member designation: U = upper, M = middle, and L = lower

<sup>2</sup> Item designation: H = horizontal, V = vertical, D = diagonal, C = connection, and O = others





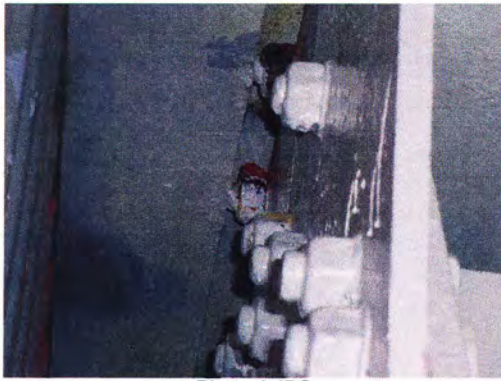


Photo 1.JPG  
12/11/2012



Photo 2.JPG  
12/11/2012



Photo 3.JPG  
12/11/2012

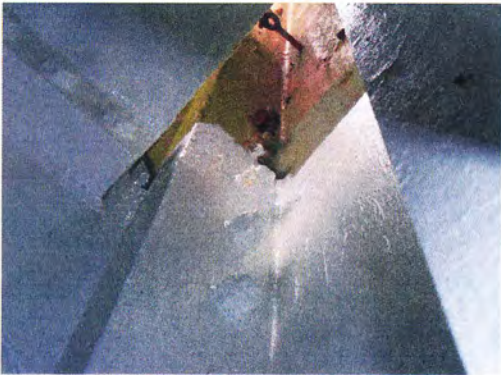


Photo 4.JPG  
12/11/2012



Photo 5.JPG  
12/11/2012



Photo 6.JPG  
12/11/2012



## Inspection Data Sheet: North Truss (Level 3)

Observ. No.	Location / Identification			Photo No.	Inspection Comments
	Chord <sup>1</sup>	Horiz. Location	Item <sup>2</sup>		
1	D	3.7-3.8	D	1	CORROS. @ FLANGE ON EXTERIOR SIDE
<b>Sutro Tower</b>				Signature:	Page: <u>  1  </u> of <u>  1  </u>
<b>San Francisco, CA</b>				File:	Date: <u>  12/11/12  </u>

<sup>1</sup> Chord member designation: U = upper, M = middle, and L = lower

<sup>2</sup> Item designation: H = horizontal, V = vertical, D = diagonal, C = connection, and O = others

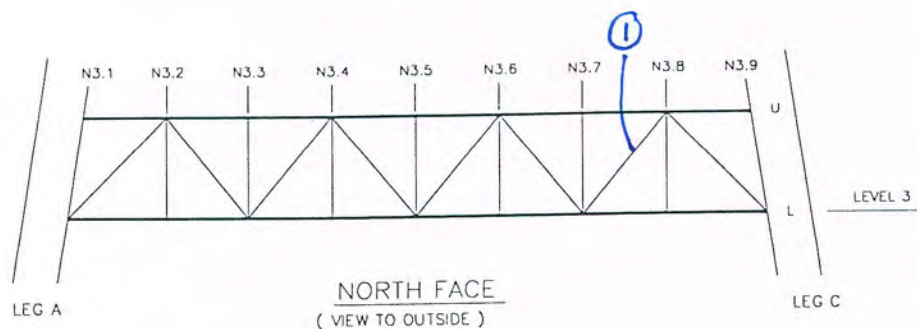
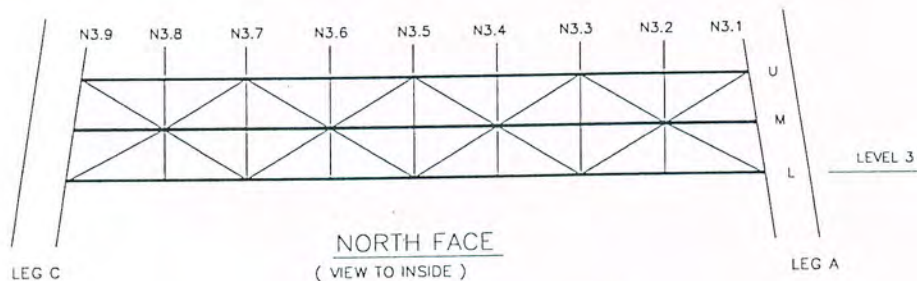




Photo 1.JPG  
12/11/2012



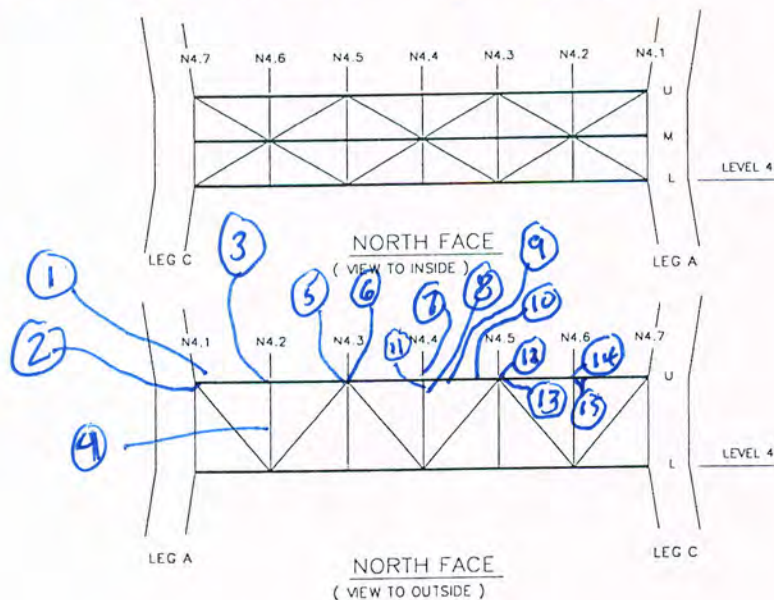
# Inspection Data Sheet: North Truss (Level 4)

Observ. No.	Location / Identification			Photo No.	Inspection Comments
	Chord <sup>1</sup>	Horiz. Location	Item <sup>2</sup>		
1	U	4.1	F	1	Loose bolts (6) @ <del>EL. COND.</del>
2	U	4.1	C	2	RF (2)
3	U	4.2	C	3	CORR. @ X FOR SKIN
4	X	4.2	C	4	CORR. @ X FOR SKIN
5	U	4.3	C	5	RF (11), CORR. @ DIAG. & TOP CHORD
6	"	"	"	6	RF (8)
7	U	4.4	C	7	RF (4)
8	V	4.4	V	8	CORR. @ FLG
9	U	4.4	H	9	" " "
10	U	4.5	H	10	" " " @ BRKT
11	V	4.4	V	11	" " TOP OF <del>BRKT</del> COLUMN
12	U	4.5	C	12	RF (10) & CORR. @ WEB & DIAG.
13	U	4.5	"	13	RF (13)
14	U	4.6	"	14	RF (3) & CORR. @ WEB OF TOP CHORD
15	U	4.6	H	15	A
Sutro Tower				Signature:	Page: 1 of 3
San Francisco, CA				File:	Date: 12/11/12

<sup>1</sup> Chord member designation: U = upper, M = middle, and L = lower

<sup>2</sup> Item designation: H = horizontal, V = vertical, D = diagonal, C = connection, and O = others

F = FASTENER G = GUSSET X = ANGLE



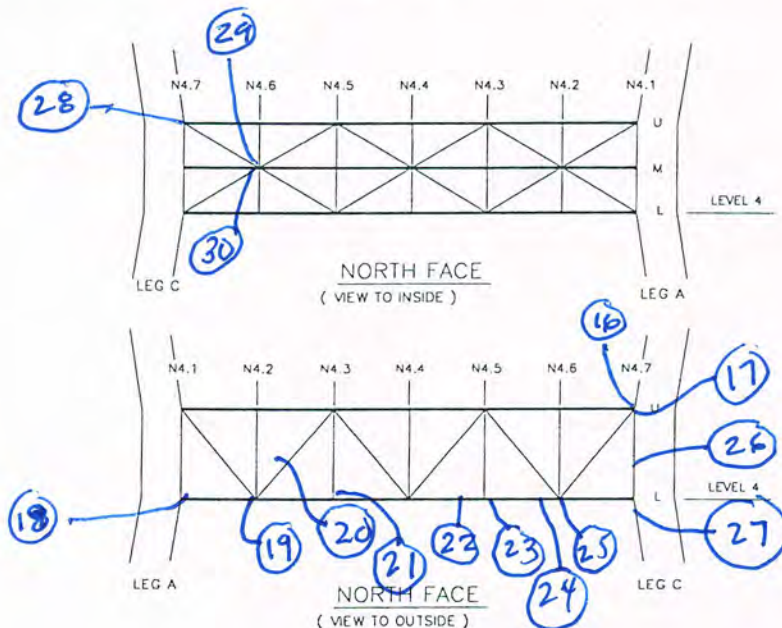


# Inspection Data Sheet: North Truss (Level 4)

Observ. No.	Location / Identification			Photo No.	Inspection Comments
	Chord <sup>1</sup>	Horiz. Location	Item <sup>2</sup>		
16	U	4.7	C	16	RF (14)
17	"	"	C	17	SAME CORR
18	L	4.1	C	18	RF (6)
19	L	4.2	KR	19	KNIFE PLATE TO COL. CATCH POINT (TYP)
20	ELEC. BX	4.2-4.3	EL. BOX	20	ELEC. BOXES CORRODED TURN
21	L	4.3	C	21	RF (3) + CORR. @ WEB of L. CHORD
22	L	4.5	X	22	CORR OF SKIN ATTACHMENT X @ H. CHORD
23	L	4.5	C	23	RF (5) + CORR. ON FLG of COL.
24	L	4.6	X	24	SAME
25	L	4.6	C	25	RF (17)
26	V	4.7	V	26	CORR @ WEB of COL.
27	V	4.7	V	27	RF (3) @ EXT. BELOW SKW CHANNEL
28	D	4.7	C	28	RF (1)
29	M	4.6	C	29	RF (5)
30	M	4.6	C	30	CORR. @ PLATE
Sutro Tower				Signature:	Page: <u>2</u> of <u>3</u>
San Francisco, CA				File:	Date: <u>12/11/12</u>

<sup>1</sup> Chord member designation: U = upper, M = middle, and L = lower

<sup>2</sup> Item designation: H = horizontal, V = vertical, D = diagonal, C = connection, and O = others





## Inspection Data Sheet: North Truss (Level 4)

Observ. No.	Location / Identification			Photo No.	Inspection Comments
	Chord <sup>1</sup>	Horiz. Location	Item <sup>2</sup>		
31	M	4.5-4.6	H	31	CORR. @ INT. EDGE & T. FLG @ SKIN CORN
32	"	4.4-4.5	"	32	" " "
33	m/v	4.5	m/v	33	RF(3) + CORR. @ WEB of M. CHORD
34	M/V	4.5	M/V	<del>34</del>	RF(2) NO PHOTO
35	M/D	4.4	M/D	<del>34</del>	RF(4)
36	M	4.3-4.4	M	35	SAME
37	"	"	"	36	SAME
38	m/v	4.3	m/v	<del>37</del>	RF(1)
39	M	4.2	M	38	RF(1) + CORR ON WEB @ END
Sutro Tower				Signature:	
San Francisco, CA				File:	
				Page: 3 of 3	
				Date: 12/11/12	

<sup>1</sup> Chord member designation: U = upper, M = middle, and L = lower

<sup>2</sup> Item designation: H = horizontal, V = vertical, D = diagonal, C = connection, and O = others

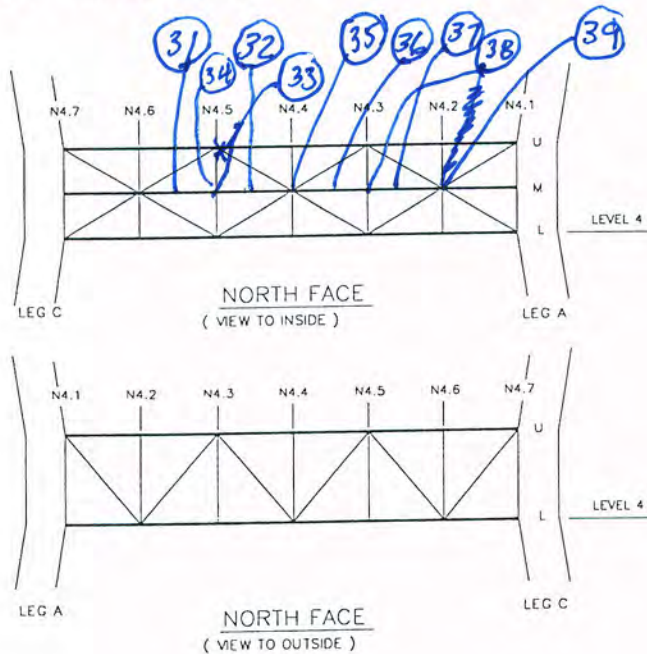






Photo 01.JPG  
12/11/2012



Photo 02.JPG  
12/11/2012



Photo 03.JPG  
12/11/2012



Photo 04.JPG  
12/11/2012



Photo 05.JPG  
12/11/2012



Photo 06.JPG  
12/11/2012



Photo 07.JPG  
12/11/2012



Photo 08.JPG  
12/11/2012

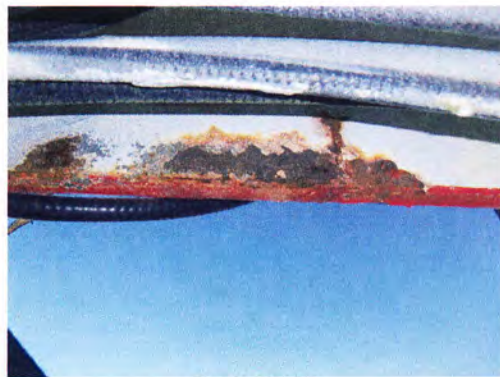


Photo 09.JPG  
12/11/2012



Photo 10.JPG  
12/11/2012



Photo 11.JPG  
12/11/2012

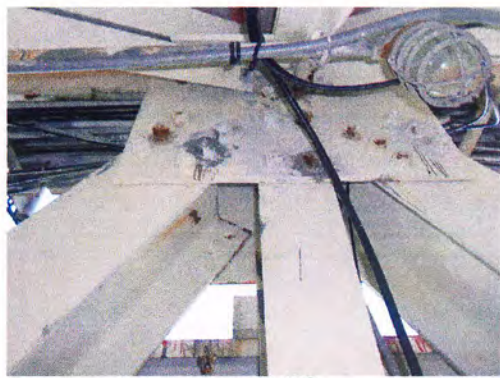


Photo 12.JPG  
12/11/2012





Photo 13.JPG  
12/11/2012



Photo 14.JPG  
12/11/2012



Photo 15.JPG  
12/11/2012

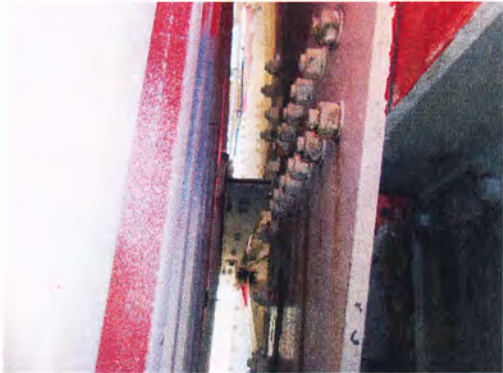


Photo 16.JPG  
12/11/2012



Photo 17.JPG  
12/11/2012



Photo 18.JPG  
12/11/2012



Photo 19.JPG  
12/11/2012

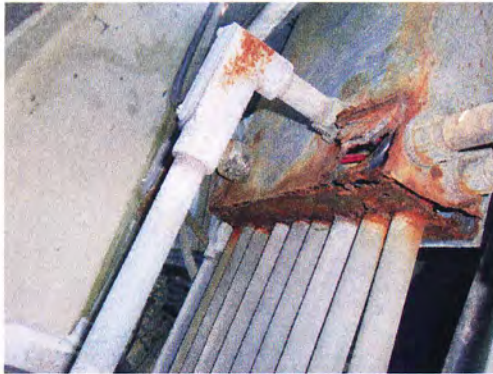


Photo 20.JPG  
12/11/2012



Photo 21.JPG  
12/11/2012



Photo 22.JPG  
12/11/2012

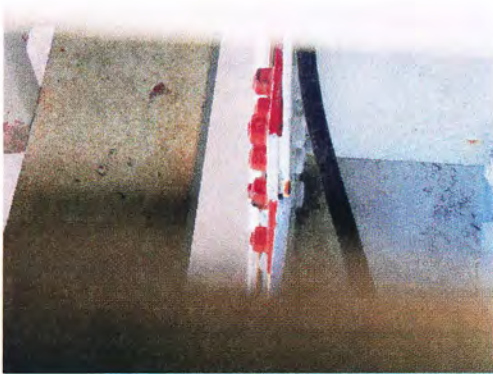


Photo 23.JPG  
12/11/2012



Photo 24.JPG  
12/11/2012





Photo 25.JPG  
12/11/2012



Photo 26.JPG  
12/11/2012



Photo 27.JPG  
12/11/2012



Photo 28.JPG  
12/11/2012



Photo 29.JPG  
12/11/2012



Photo 30.JPG  
12/11/2012



Photo 31.JPG  
12/11/2012

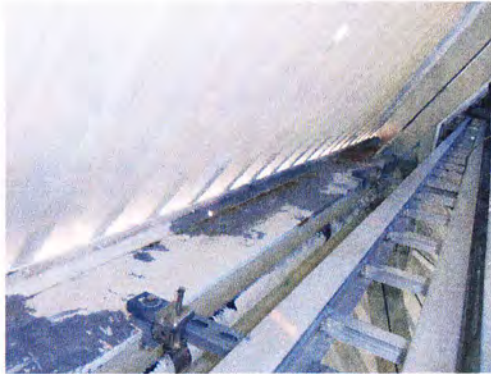


Photo 32.JPG  
12/11/2012

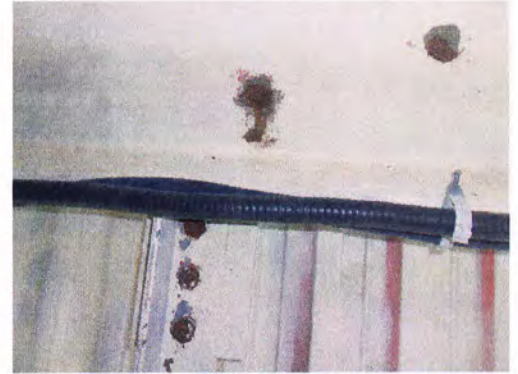


Photo 33.JPG  
12/11/2012



Photo 34.JPG  
12/11/2012

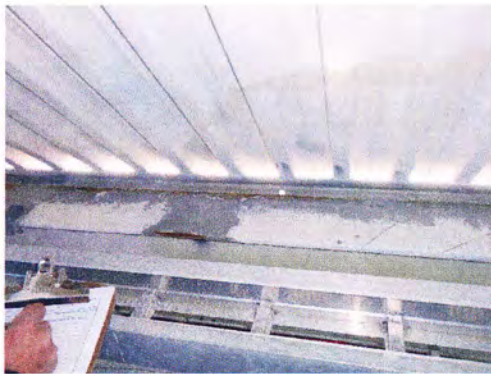


Photo 35.JPG  
12/11/2012

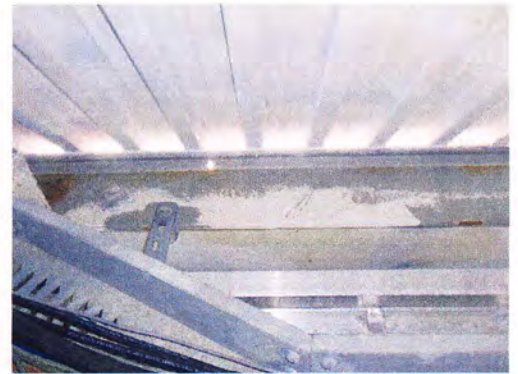


Photo 36.JPG  
12/11/2012





Photo 37.JPG  
12/11/2012

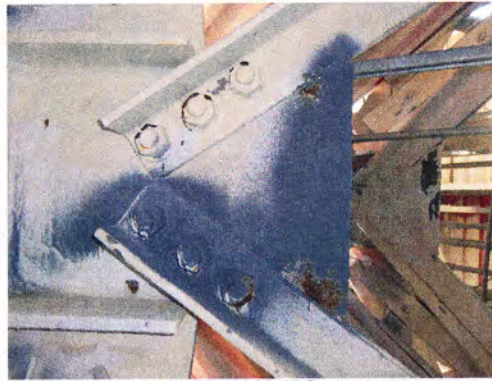


Photo 38.JPG  
12/11/2012



## Inspection Data Sheet: Leg A (Level 4 to Level 5)

Observ. No.	Location / Identification			Photo No.	Observation Comments
	Column	Elevation	Item <sup>1</sup>		
1	1-3	5.1	BRKT	1	RF (1) @ ELEV. GUIDE RAIL BRKT
2	1	5.1	TYP	2	CORR POCKET, OCCURS OTHER LOC.
3	3	5.0	C	3	RF (1) @ GUSSET OF TRUSS BTM CHD
4	1	4.18	C	4	RF (1)
5	3	4.19	C	5	RF (1) @ SKIN
6	1	5.10	C	6	RF (3)
7	1	4.19	C	7	RF (3)
8	1	4.18	C	8	RF (2)
9	2	4.17	C	9	RF (1) NOT VIS. IN PHOTO
10	1	4.18	L	10	RF (3) @ DBL PL
11	1	4.15	C	11	RF (1)
12	2	4.15	C	12	RF (2) @ SKIN
13	1	4.14	C	13	RF (1)
14	3	4.12	L	14	RF (2) @ DBL PL
15	1	4.11	C	15	RF (1) @ SKIN
16	1	4.10	C	16	RF (2)
17	3	4.9	C	17	RF (1)
<b>Sutro Tower</b>				Signature: _____	Page: <u>1</u> of <u>2</u>
<b>San Francisco, CA</b>				File: _____	Date: <u>12-10-12</u>

<sup>1</sup> Item designation: L=leg member, D=diagonal, H=horizontal, C=connection, O=others



### Inspection Data Sheet: Leg A (Level 4 to Level 5)

[illegible]

<sup>1</sup> Item designation: L=leg member, D=diagonal, H=horizontal, C=connection, O=others





Photo 01.JPG  
12/10/2012



Photo 02.JPG  
12/10/2012



Photo 03.JPG  
12/10/2012



Photo 04.JPG  
12/10/2012



Photo 05.JPG  
12/10/2012



Photo 06.JPG  
12/10/2012



Photo 07.JPG  
12/10/2012



Photo 08.JPG  
12/10/2012



Photo 09.JPG  
12/10/2012



Photo 10.JPG  
12/10/2012



Photo 11.JPG  
12/10/2012



Photo 12.JPG  
12/10/2012





Photo 13.JPG  
12/10/2012



Photo 14.JPG  
12/10/2012



Photo 15.JPG  
12/10/2012



Photo 16.JPG  
12/10/2012



Photo 17.JPG  
12/10/2012



Photo 18.JPG  
12/10/2012



Photo 19.JPG  
12/10/2012

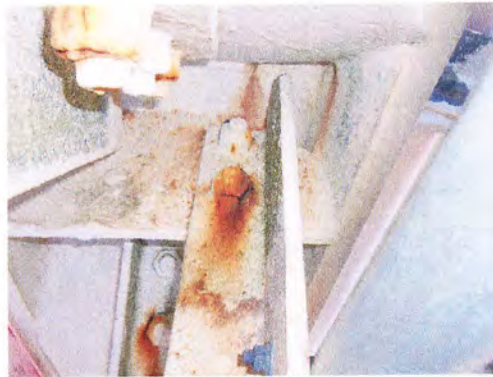


Photo 20.JPG  
12/10/2012

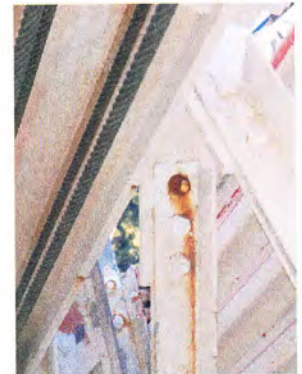


Photo 21.JPG  
12/10/2012



Photo 22.JPG  
12/10/2012



Photo 23.JPG  
12/10/2012

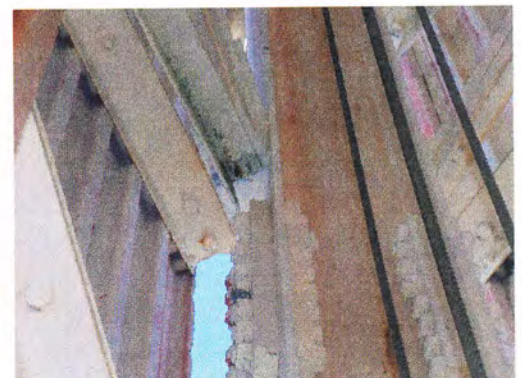


Photo 24.JPG  
12/10/2012





Photo 25.JPG  
12/10/2012



Photo 26.JPG  
12/10/2012



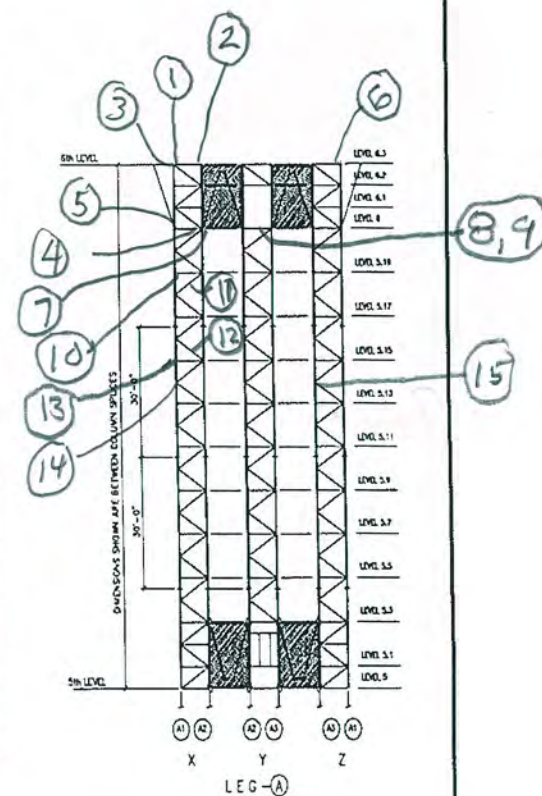
Photo 27.JPG  
12/10/2012



Photo 28.JPG  
12/10/2012

# Inspection Data Sheet: Leg A (Level 5 to Level 6)

Observ. No.	Location / Identification			Photo No.	Observation Comments
	Column	Elevation	Item <sup>1</sup>		
1	1	6.3	C	1	RF(2)
2	2	6.3	C	2	RF(1)
3	1	6.3	C	3	RF(1)
4	2	6.0	C	4	RF(1)
5	1	6.0	C	5	RF(2)
6	1	6.3	C	C	RF(1)
7	2	6.0	L	7	CORR. WEB
8	2-3	6.0		8	RF(2) @ LARGE KNUCKLE DEVICE
9	2-3	6.0		9	CORR @ EYELETS of " "
10	1	5.19	C	10	RF(1)
11	2	5.19	C	11	RF(1)
12	2 & 3	TYP	K R	12	CORR POCKET @ KNIFE R TO COL THIS CONDITION IS TYPICAL AT NUMEROUS LOCATIONS
13	1	5.15	ELC	13	CORR. @ ELEV. CABLE GUIDE X's
14	1	TYP	K R	14	KNIFE R POCKET - TYPICAL
15	3	5.14	C	15	RF(1)
Sutro Tower				Signature:	Page: 1 of 2
San Francisco, CA				File:	Date: 12-10-12

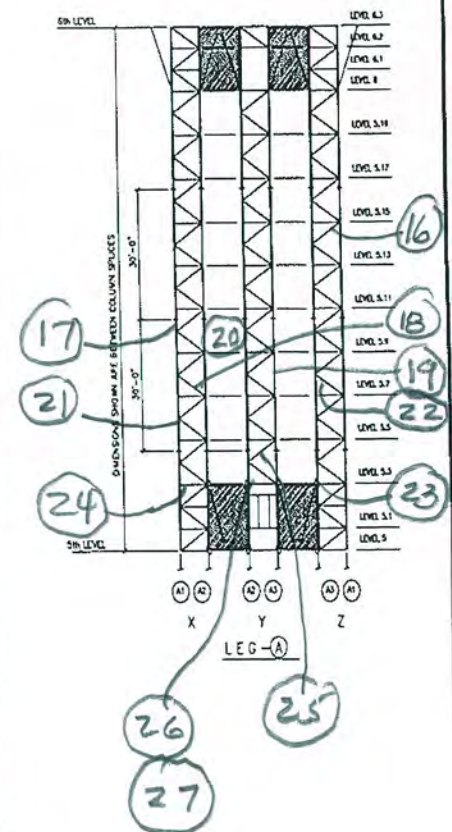


<sup>1</sup> Item designation: L=leg member, D=diagonal, H=horizontal, C=connection, O=others



## Inspection Data Sheet: Leg A (Level 5 to Level 6)

Observ. No.	Location / Identification			Photo No.	Observation Comments
	Column	Elevation	Item <sup>1</sup>		
16	1	5.13	C	16	RF (1)
17	1	5.11	L	17	RF (1) - EXT. SIDE FROM OBS. PLATFORM
					MORE RF BELOW
18	2	5.7	C	18	RF (1)
19	3	5.8	C	19	RF (1)
20	2	5.10	EL. BOX	20	BOTTOM OF ELEC. BOX CORR.
21	1	5.7	C	21	CORR. @ 45° BENT PL - POCKET
22	3	5.8	C	22	RF (1)
23	3	5.3	C	23	RF (3) @ CONN. PL OF TRUSS
24	1	5.3	C	24	RF (1)
25	2	5.4	C	25	RF (2)
26	2	5.3	C	26	RF (1) @ DBL PL
27	2	5.3	BRKT	27	RF (1) @ PIPE CLAMP CONN.
Sutro Tower				Signature:	Page: <u>2</u> of <u>2</u>
San Francisco, CA				File:	Date: <u>12-10-12</u>



<sup>1</sup> Item designation: L=leg member, D=diagonal, H=horizontal, C=connection, O=others





Photo 01.JPG  
12/10/2012



Photo 02.JPG  
12/10/2012



Photo 03.JPG  
12/10/2012



Photo 04.JPG  
12/10/2012



Photo 05.JPG  
12/10/2012



Photo 06.JPG  
12/10/2012



Photo 07.JPG  
12/10/2012



Photo 08.JPG  
12/10/2012



Photo 09.JPG  
12/10/2012

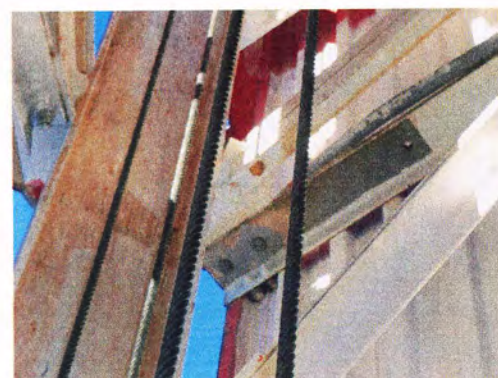


Photo 10.JPG  
12/10/2012



Photo 11.JPG  
12/10/2012



Photo 12.JPG  
12/10/2012





Photo 13.JPG  
12/10/2012

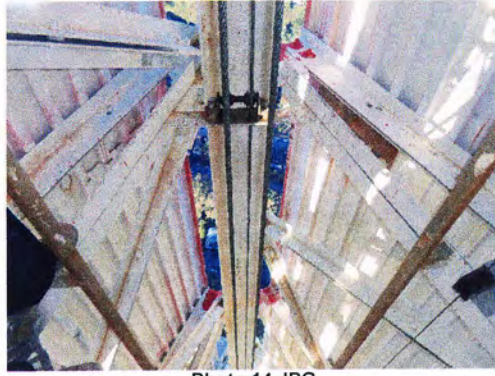


Photo 14.JPG  
12/10/2012



Photo 15.JPG  
12/10/2012



Photo 16.JPG  
12/10/2012

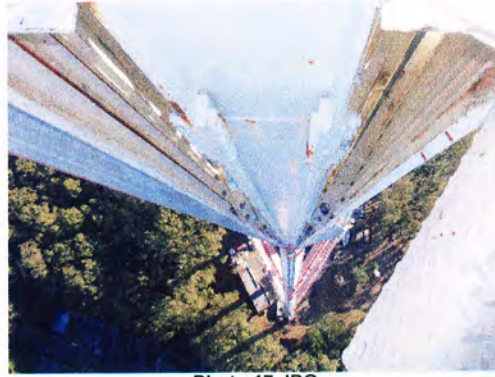


Photo 17.JPG  
12/10/2012



Photo 18.JPG  
12/10/2012



Photo 19.JPG  
12/10/2012



Photo 20.JPG  
12/10/2012



Photo 21.JPG  
12/10/2012



Photo 22.JPG  
12/10/2012



Photo 23.JPG  
12/10/2012



Photo 24.JPG  
12/10/2012



Photo 25.JPG  
12/10/2012



Photo 26.JPG  
12/10/2012

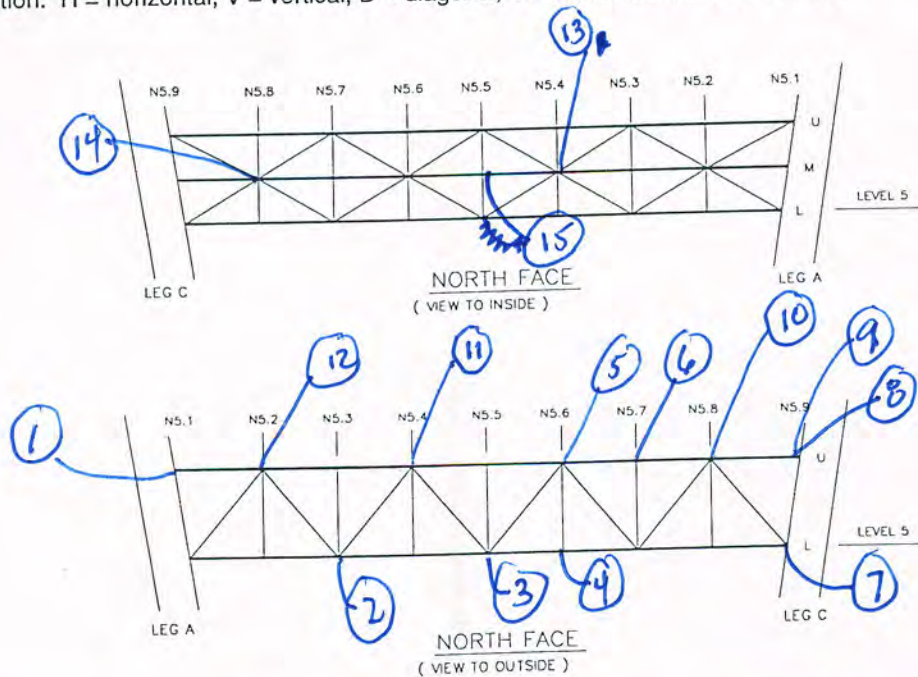


## Inspection Data Sheet: North Truss (Level 5)

Observ. No.	Location / Identification			Photo No.	Inspection Comments
	Chord <sup>1</sup>	Horiz. Location	Item <sup>2</sup>		
1	T	S.1	C	1	RF(2)
2	B	S.3	C	2	RF(3) 2UP OUTSIDE
3	B	S.5	C	3	RF(3) @ OUTSIDE
4	B	S.6	C	4	RF(2)
5	T	S.6	C	5	RF(4) @ OUTSIDE
6	T/D	S.7	C	6	RF(2) 1@ FUG OF DIAG, 1@ INT GUSSET
7	B	S.9	C	7	RF(2) @ INT & RF(3) @ EXT.
8	T	S.9	C	8	RF(3) 1@ DIAGONAL, 2@ GUSSET
9	T	S.9	C	9	RF(4) @ EXT. + RUSTY CORNER PIN @
10	T	S.8	C	10	RF(4) @ EXT.
11	T	S.4	C	11	RF(5) @ EXT.
12	T	S.2	C	12	RF(2) @ EXT
13	M	S.4	C/B	13	RF(1)
14	M	S.8	M	14	RF(2)
15	DM	S.5	C	15	RF(3) <del>RF(3)</del> CORN @ CORNER fin M. CR
Sutro Tower				Signature: _____	
San Francisco, CA				Date: 12/11/12	

<sup>1</sup> Chord member designation: U = upper, M = middle, and L = lower

<sup>2</sup> Item designation: H = horizontal, V = vertical, D = diagonal, C = connection, and O = others



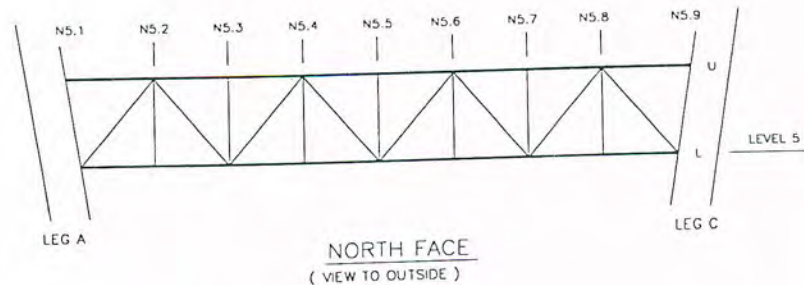
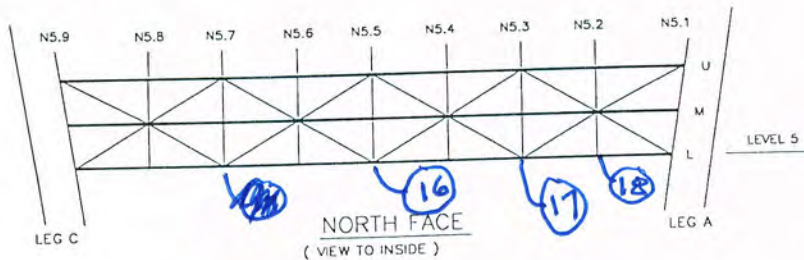
NOTE: EXT @ TOP CHORD <sup>EXT.</sup> ONLY PARTIALLY VISIBLE FROM TRUSS.



## Inspection Data Sheet: North Truss (Level 5)

[illegible]<sup>1</sup> Chord member designation: U = upper, M = middle, and L = lower

<sup>2</sup> Item designation: H = horizontal, V = vertical, D = diagonal, C = connection, and O = others





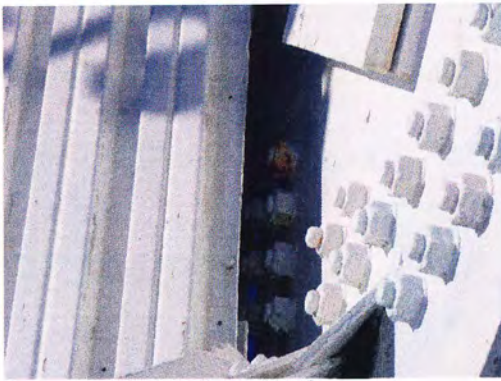


Photo 01.JPG  
12/11/2012



Photo 02.JPG  
12/11/2012



Photo 03.JPG  
12/11/2012



Photo 04.JPG  
12/11/2012

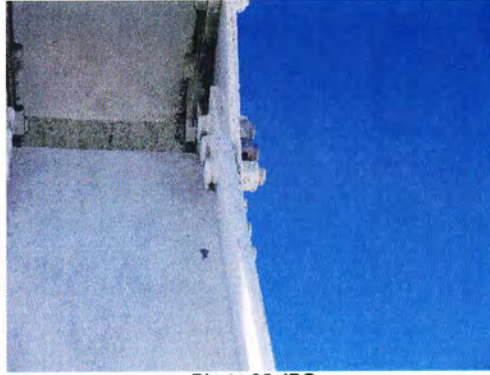


Photo 05.JPG  
12/11/2012



Photo 06.JPG  
12/11/2012

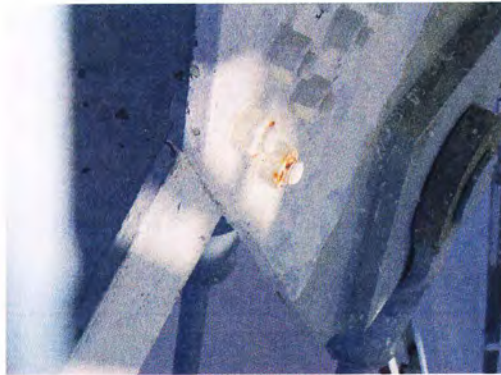


Photo 07.JPG  
12/11/2012

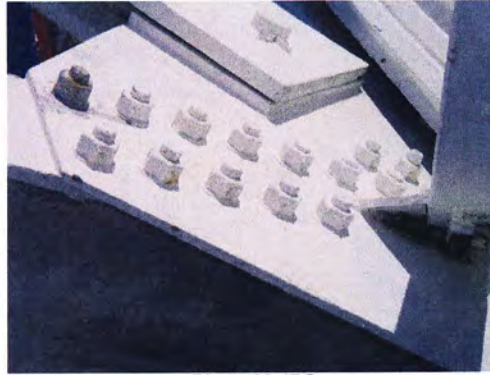


Photo 08.JPG  
12/11/2012



Photo 09.JPG  
12/11/2012



Photo 10.JPG  
12/11/2012

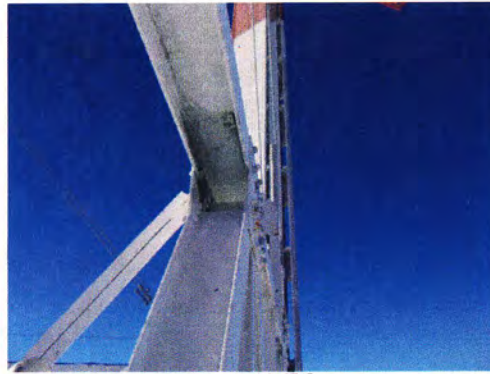


Photo 11.JPG  
12/11/2012



Photo 12.JPG  
12/11/2012





Photo 13.JPG  
12/11/2012

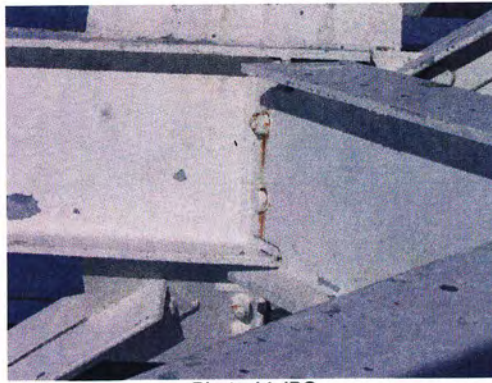


Photo 14.JPG  
12/11/2012

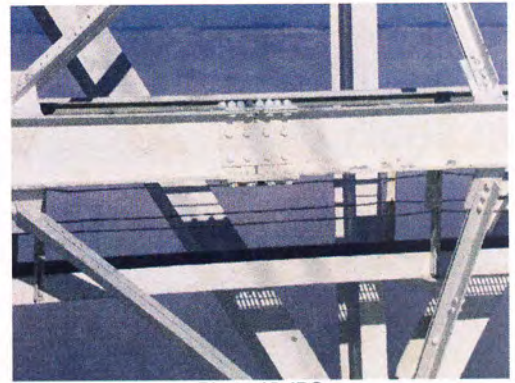


Photo 15.JPG  
12/11/2012

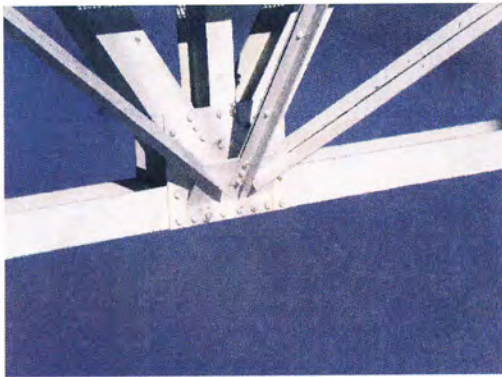


Photo 16.JPG  
12/11/2012

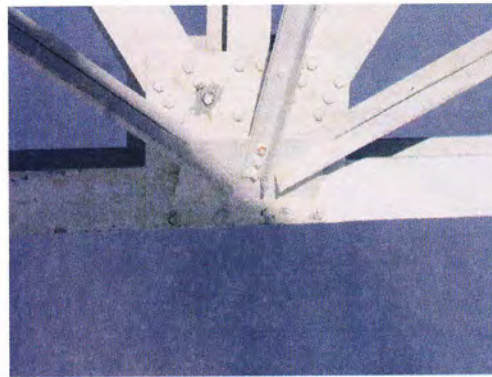


Photo 17.JPG  
12/11/2012



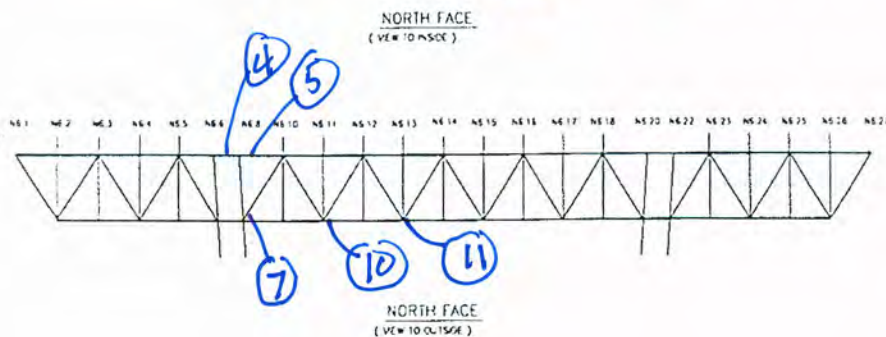
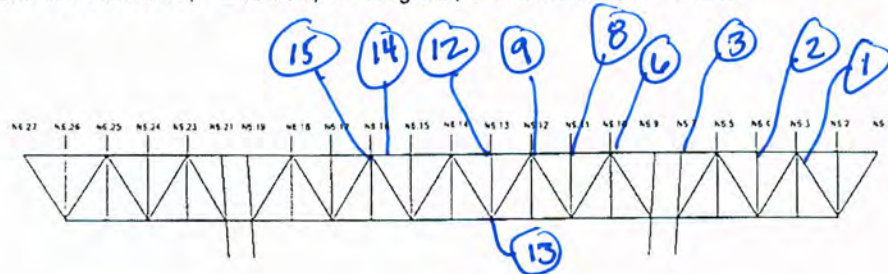
Photo 18.JPG  
12/11/2012



# Inspection Data Sheet: North Truss (Level 6)

Observ. No.	Location / Identification			Photo No.	Inspection Comments
	Chord <sup>1</sup>	Horiz. Location	Item <sup>2</sup>		
1	T	6.3	C	1	RF (3)
2	T	6.4	C	2	RF (1)
3	T	6.7	C	3	RF (2)
4	T	6.7	C	4	RF (1)
5	T	6.8	C	5	RF (2)
6	T	6.10	C	6	RF (1)
7	B/D	6.8	C	7	RF (1)
8	T	6.11	C	8	RF (1)
9	T	6.12	C	9	RF (3)
10	B	6.1	C	10	RF (1)
11	B	6.13	C	11	RF (1)
12	T	6.13	C	12	RF (2)
13	V	6.13	<del>C</del>	13	RF (1)
14	T	6.14	C	14	RF (1) @ Top Chord Conn. Pl
15	T	6.16	<del>C</del>	15	RF (6)
Sutro Tower				Signature:	Page: 1 of 4
San Francisco, CA				File:	Date: 12-11-12

<sup>1</sup> Chord member designation: OU = outer upper, OL = outer lower, IU = inner upper, and IL = inner lower  
<sup>2</sup> Item designation: H = horizontal, V = vertical, D = diagonal, C = connection, O = others



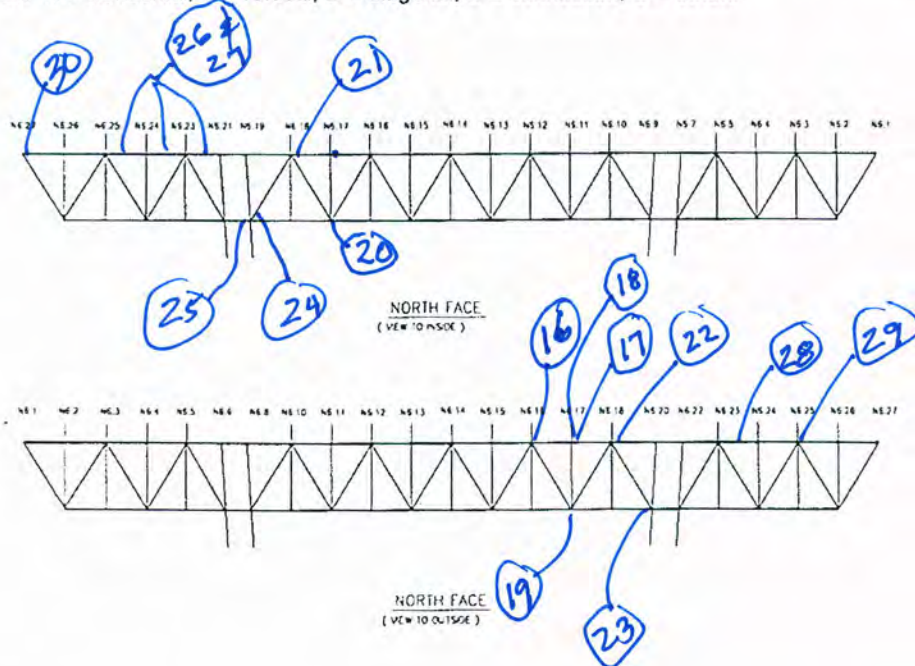


# 

Observ. No.	Location / Identification			Photo No.	Inspection Comments
	Chord <sup>1</sup>	Horiz. Location	Item <sup>2</sup>		
16	T	G.16	C	16	RF (3)
17	T	G.17	C	17	RF (2)
18	T	G.17	H	18	RF (3)
19	B	G.17	C	19	RF (1)
20	B	G.17	C	20	RF (2)
21	T	G.18	C	21	RF (5)
22	T	G.18	C	22	RF (3)
23	B	G.20	C	23	CORR. @ WEB & KNIFE PL + (2) RF
24	B	G.19	C	24	RF (2)
25	B	G.19	BLK	25	RF (2) @ LARGE KNIFE DEVICE
26	T	G.21	H	26	RF ALL ALONG G.21-G.25
27	T	-G.25	H	27	" " " " "
28	T	G.23/G.24	H	28	" " " " G.23-G.24
29	T	G.25	C	29	RF (3)
30	RAILING	G.27	RAILING	30	BOLT MISSING
Sutro Tower				Signature:	Page: 2 of 4
San Francisco, CA				File:	Date: 12-27-12

<sup>1</sup> Chord member designation: OU = outer upper, OL = outer lower, IU = inner upper, and IL = inner lower

<sup>2</sup> Item designation: H = horizontal, V = vertical, D = diagonal, C = connection, O = others





# Inspection Data Sheet: North Truss (Level 6)

Observ. No.	Location / Identification			Photo No.	Inspection Comments
	Chord <sup>1</sup>	Horiz. Location	Item <sup>2</sup>		
31	T	6.23/6.24	H	31	RF ALL ALONG 6.23-6.24
32	T	EAST END	WIRE	32	SAFETY WIRE SAGGING & LOOPED
33	"	"	"	"	OVER <del>UPPER</del> POST. TIGHTEN & RUN WIRE THROUGH A HOLE.
34	T	6.23	C	34	RF (3)
35	<del>B</del> B	6.23	C	35	RF (1)
36	T	6.25	C	36	RF (1) & CORR. @ AS
37	T	6.18	C	37	RF (16)
38	T	6.17	C	38	RF (6)
39	T	6.16	C	39	RF (13)
40	T	6.15	C	40	RF (6)
41	T	6.14	C	41	RF (7)
42	B	6.17	C	42	RF (1)
43	B	6.15	C	43	RF (10)
44	B	6.13	C	44	RF (4)
Sutro Tower				Signature:	Page: <u>3</u> of <u>4</u>
San Francisco, CA				File:	Date: <u>12-27-12</u>

<sup>1</sup> Chord member designation: OU = outer upper, OL = outer lower, IU = inner upper, and IL = inner lower

<sup>2</sup> Item designation: H = horizontal, V = vertical, D = diagonal, C = connection, O = others

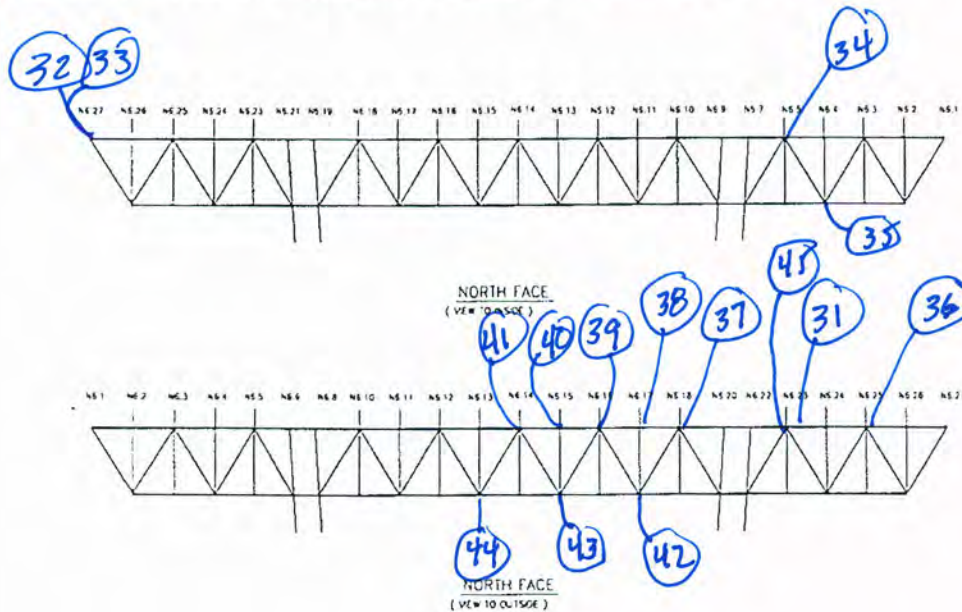










Photo 01.JPG  
12/11/2012



Photo 02.JPG  
12/11/2012



Photo 03.JPG  
12/11/2012



Photo 04.JPG  
12/11/2012



Photo 05.JPG  
12/11/2012



Photo 06.JPG  
12/11/2012



Photo 07.JPG  
12/11/2012



Photo 08.JPG  
12/11/2012



Photo 09.JPG  
12/11/2012



Photo 10.JPG  
12/11/2012



Photo 11.JPG  
12/11/2012



Photo 12.JPG  
12/11/2012





Photo 13.JPG  
12/11/2012



Photo 14.JPG  
12/11/2012



Photo 15.JPG  
12/11/2012



Photo 16.JPG  
12/27/2012



Photo 17.JPG  
12/27/2012



Photo 18.JPG  
12/27/2012

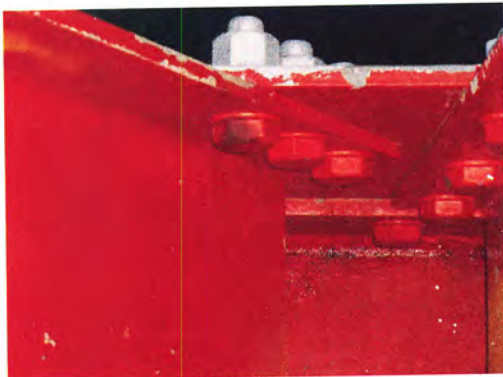


Photo 19.JPG  
12/27/2012



Photo 20.JPG  
12/27/2012



Photo 21.JPG  
12/27/2012



Photo 22.JPG  
12/27/2012



Photo 23.JPG  
12/27/2012



Photo 24.JPG  
12/27/2012





Photo 25.JPG  
12/27/2012



Photo 26.JPG  
12/27/2012



Photo 27.JPG  
12/27/2012

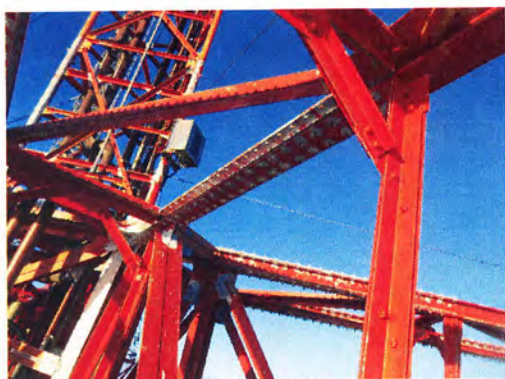


Photo 28.JPG  
12/27/2012



Photo 29.JPG  
12/27/2012



Photo 30.JPG  
12/27/2012



Photo 31.JPG  
12/27/2012

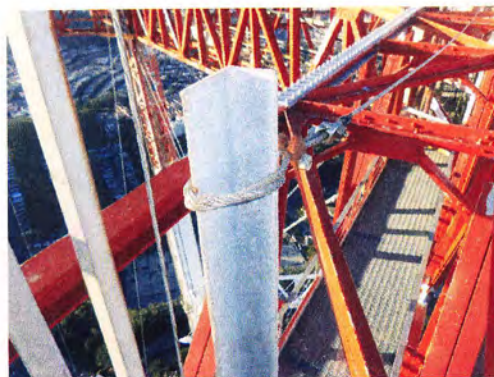


Photo 32.JPG  
12/27/2012



Photo 33.JPG  
12/27/2012



Photo 34.JPG  
12/27/2012

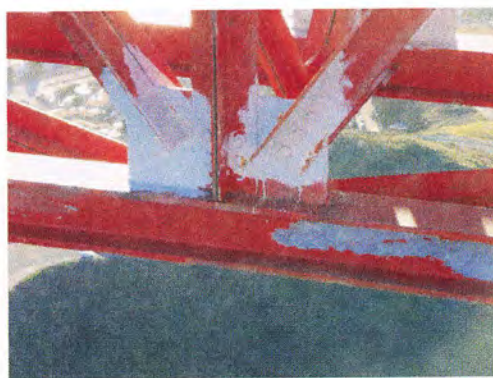


Photo 35.JPG  
12/27/2012



Photo 36.JPG  
12/27/2012





Photo 37.JPG  
12/27/2012



Photo 38.JPG  
12/27/2012



Photo 39.JPG  
12/27/2012



Photo 40.JPG  
12/27/2012



Photo 41.JPG  
12/27/2012

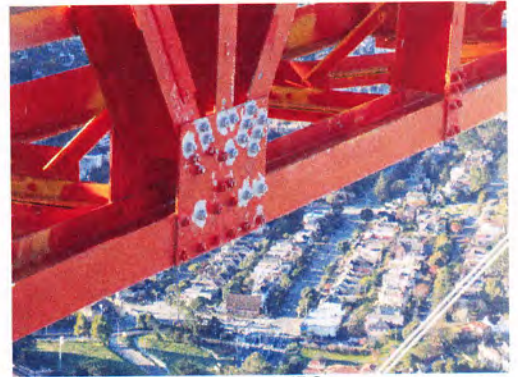


Photo 42.JPG  
12/27/2012

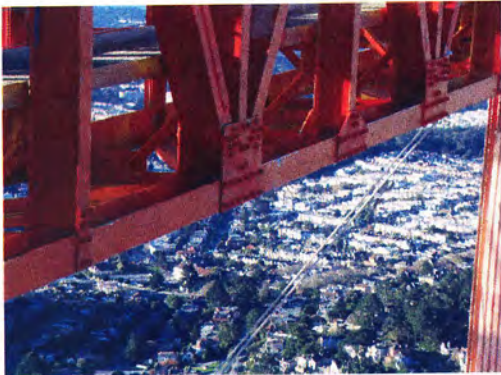


Photo 43.JPG  
12/27/2012



Photo 44.JPG  
12/27/2012



Photo 45.JPG  
12/27/2012



Photo 46.JPG  
12/27/2012



Photo 47.JPG  
12/27/2012



Photo 48.JPG  
12/27/2012





Photo 49.JPG  
12/27/2012



Photo 50.JPG  
12/27/2012

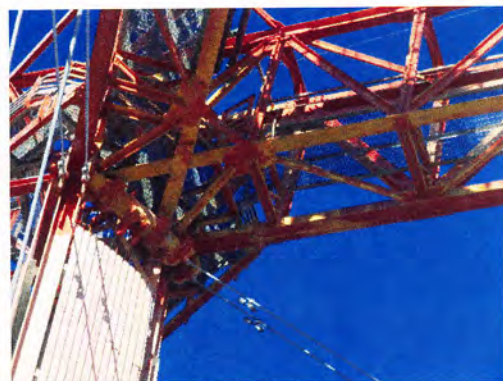


Photo 51.JPG  
12/27/2012

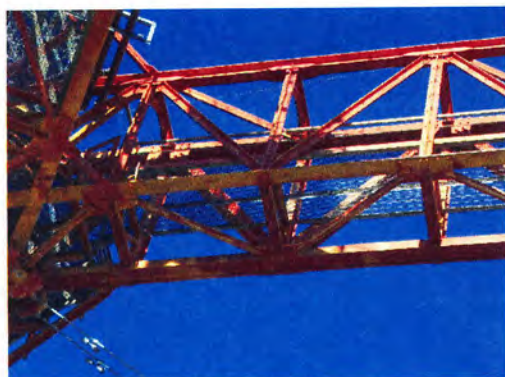


Photo 52.JPG  
12/27/2012



Photo 53.JPG  
12/27/2012



Photo 54.JPG  
12/27/2012



Photo 55.JPG  
12/27/2012



Photo 56.JPG  
12/27/2012



Photo 57.JPG  
12/27/2012



**Inspection Data Sheet: Antenna Mount Stack "A" (Level 6 to base of antenna)**

[illegible]

<sup>1</sup> Item designation: L=leg member, D=diagonal, H=horizontal, C=connection, O=others





Photo 1.JPG  
01/19/2013



Photo 2.JPG  
01/19/2013



Photo 3.JPG  
01/19/2013



Photo 4.JPG  
01/19/2013



Photo 5.JPG  
01/19/2013



Photo 6.JPG  
01/19/2013